



**Doncaster
Council**

Report

Date: 3 November 2022

To: The Overview and Scrutiny Management Committee

Report Title: Locality Plans Impact and Insight from Community and Partners

Relevant Cabinet Member(s)	Wards Affected	Key Decision
Cllr Rachael Blake	All	n/a

EXECUTIVE SUMMARY

1. Locality working involves the whole Council pulling together with partners to deliver on local 'deals' and Locality Plans that have been produced 'with' and 'by' residents – not 'to' or 'for' them. Locality working means more decisions about priorities are made and influenced locally, with residents at the heart of this.
2. This report provides practical examples of the locality model "on the ground" in terms of the impact it is having on our communities and the issues that are important to them.
3. The presentation accompanying this report provides a more in depth example from each locality, covering different dimensions of locality working from health and wellbeing to economic inclusion to community safety to a better start for children and young people. The presentation also describes how the Council and partners are improving engagement with communities, reaching a greater number of people from a more diverse range of backgrounds.

EXEMPT REPORT

4. This is not an exempt report.

RECOMMENDATIONS

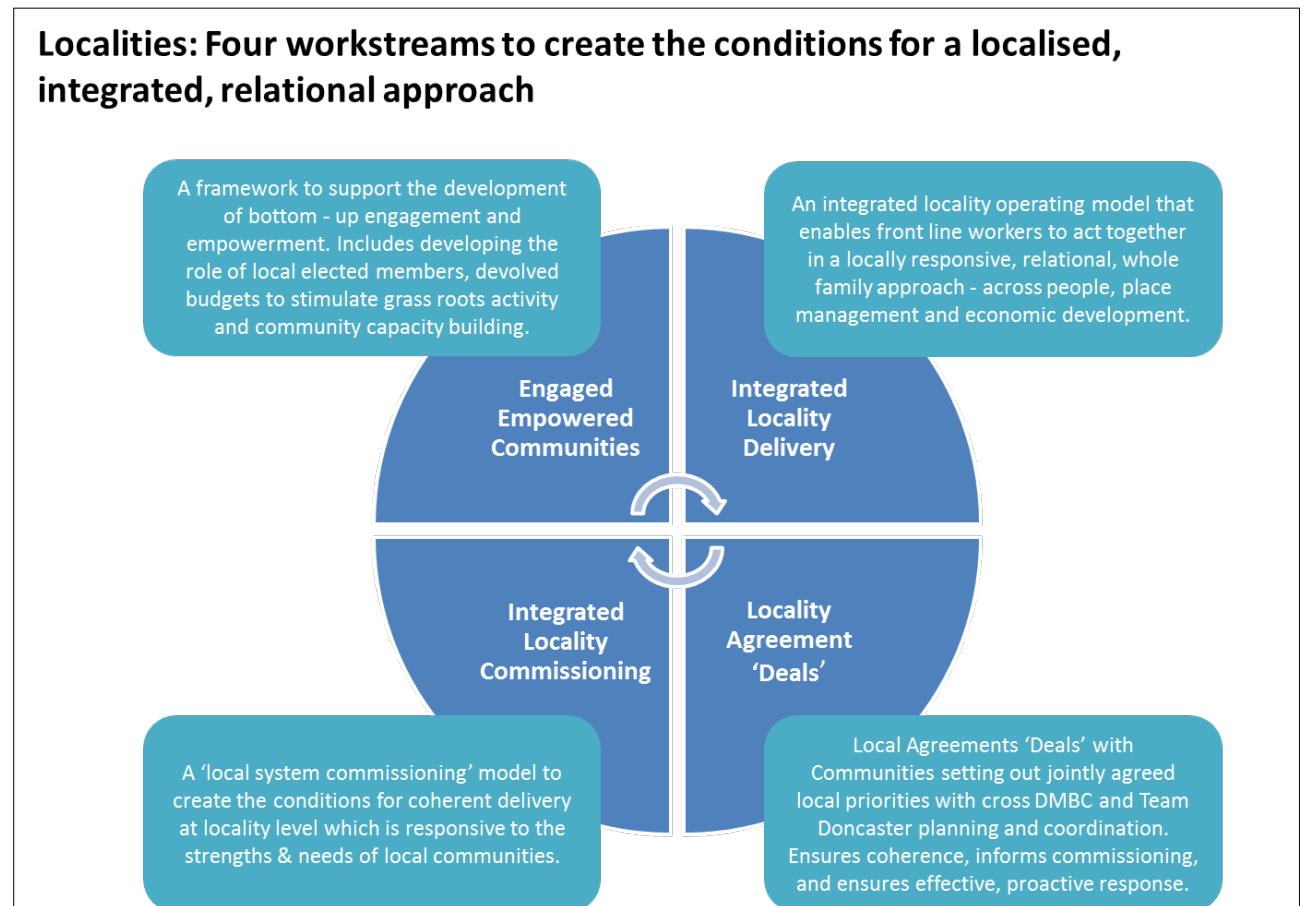
5. To note the report and presentation and comment about reported progress with delivery of the Locality Plans.

WHAT DOES THIS MEAN FOR THE CITIZENS OF DONCASTER?

6. Locality working will improve resident experience through a more locally informed, integrated and relationship focused approach. It will reduce the need for crisis response through a more preventive, integrated approach. It will support inclusive growth across the Borough by removing barriers to inclusion and connecting people and places to economic opportunity, including those facing greatest disadvantage.

BACKGROUND

7. Locality working focuses on four key interdependent areas of change (work-streams) as outlined in the diagram below:

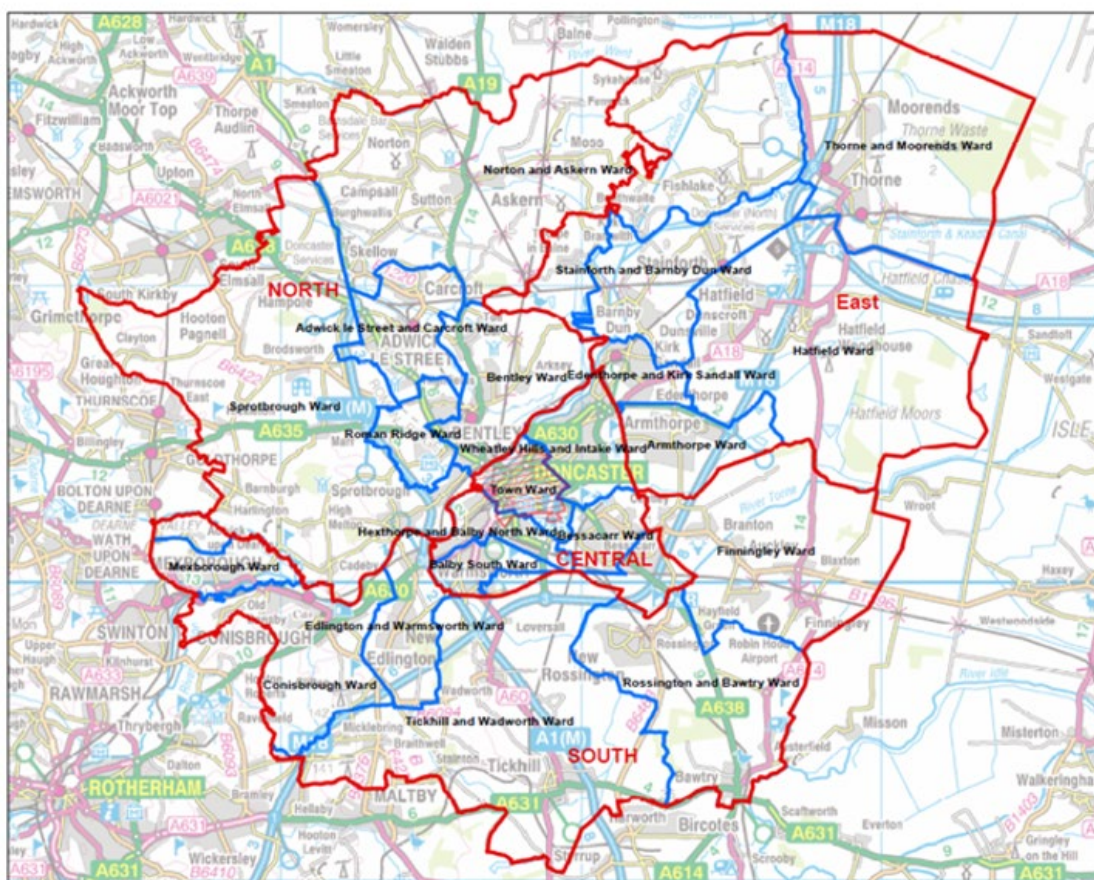


8. Fundamental design features of the project, embedded throughout are:
- i) An emphasis on a relationship based, Asset Based Community Development approach – building capability and releasing the inherent strengths of individuals, families and communities and of front-line workers.
 - ii) A shift to 'Whole Family Working', ensuring that all Council services work together with partners to take a whole family, community centred, strength-based approach to how issues are addressed, rather than one based on 'presenting symptoms'. This will enable more focus on root causes and drivers of the challenges that individuals, families and communities can face.
 - iii) An intelligence led, proportional approach, targeting and adapting responses to local strengths, needs and dynamics i.e. not a 'one size fits all' approach.
 - iv) Locality Plans, launched in August 2022, are the product of local engagement and co-design with residents and tie the above actions together so that there is a local deal for each of our communities that reflects their needs and aspirations. Locality plans look at how we can work together to strengthen communities and improve the lives and opportunities for the residents living there.

Locality working in action

9. The four Locality areas of North, East, South and Central (publicly launched in August 2022), work together and independently to improve outcomes for the community and quality of life across all of Doncaster's towns, villages and communities, reflecting the identity, character and social and economic circumstances of each local place.
10. The model is based on four pre-existing large locality footprints that have the advantage of being coterminous boundaries with several key partners (St Leger Homes, Doncaster Integrated Care Partnership (ICP), Primary Care, South Yorkshire Police).
11. Within the Central Locality there is a specific focus on the Urban Core/Centre – i.e. Doncaster City Centre and the immediate surrounding residential areas. This reflects the specific characteristics, dynamics, opportunities and challenges in this area, and extending/building on highly successful work on Complex Lives/City Centre Management.
12. Within the broader Locality there is a focus on the specific assets, strengths, needs and delivery issues in the key towns and villages of Doncaster. This will be reflected in town/village/neighbourhood level approaches, in engagement and representation and in delivery arrangements where feasible and appropriate.
13. The four Locality boundaries are outlined here.

Localities area boundaries – four Locality areas



Key: Locality boundary Ward boundary

14. Set out in the following tables are achievements for each Locality area since the launch of the plans.

EAST LOCALITY PLAN 2022-2023 - ACHIEVEMENTS		
	LOCALITY DELIVERY	UPDATES
Environment and Green Space	<ul style="list-style-type: none"> - Protect and enhance green spaces - More efficient use of energy to lower fuel bills and environmental costs - Communities are safe, attractive and culturally interesting places to live, work and travel - Reduce litter in our green spaces and communities 	<ul style="list-style-type: none"> - Sustainability team working with partners and communities to plant a tree for every child - Thermal efficiency programme in the East - Green flag awarded for Quarry Park. - Raising awareness to reduce and action enforceable outcome on recent fly tipping seeing reduction in prominent areas - Local community litter picking groups supported by Street Scene - Days of Action in Thorne - Green team newsletter to share with communities
Crime and Community Safety	<ul style="list-style-type: none"> - Reduction of dangerous driving and parking issues - Residents feeling safer and more secure - Reduction in anti-social behaviour - Reducing the negative impacts of violence and crime - Promote road safety 	<ul style="list-style-type: none"> - Regular community engagement meetings re-established. - Safer Streets funding Round 3 delivered Safer Streets Round 4 funding agreed further CCTV in areas most needed across the East - Anti-social behaviour action taken by SY Police issuing Acceptable Behaviour Contracts - Cross service/partner operations such as Operation Duxford in areas across the East - Bikeability open to primary schools for years 5 and 6 to safely ride and use bicycles - Regular off road bike patrols across Armthorpe, Stainforth, Hatfield and Dunscoft - Community Speed watch - community volunteers using handheld devices to watch the speed in their area
Youth Provision and Community Pride	<ul style="list-style-type: none"> - Young people have something to do and somewhere to go - Positive communication across all communities - Communities together and thriving - Allow groups and communities to develop and thrive 	<ul style="list-style-type: none"> - Your Life Doncaster - tool to share community good news stories and event to all communities. - Email contacts for 2,845 residents - All services to have at least one web editor who can update and add events/news/IAG - Holiday Activities and food (HAF) and universal programmes running across East during summer and half terms - Family hubs - picnic in the park over the summer holidays - Art coming to residents from Right Up Our Street - Play streets, community tool kit available. Active in the East - Dunscoft monthly street shut down for safe street play - Ukrainian Support: Involved community members in Humanitarian Cell, provided direct support for transport, accommodation, education, learning and social care. Support community drop-in's, advice clinics, collated

		and distributed donations (locally/internationally) and undertaken bespoke engagement to collate voice to influence future plans and service delivery
Mental and Physical Health	<ul style="list-style-type: none"> - Emotionally healthier, happier lives for all residents - Promote healthier lifestyles through a variety of sports for people of all ages and backgrounds - Physically healthier, happier lives for all residents 	<ul style="list-style-type: none"> - Kooth - mental health app and toolkit for young people shared across all secondary schools - Zero Suicide Alliance training across all East - Together All website for adult mental health with MyStrength app commissioned through Integrated Care Board - Championing existing sports clubs by supporting Edenthorpe Junior Football Club to expand to support girl's football - Working with Primary Care Networks and Commissioners to change the look of current services and shaping them for the future - DARTS Dance session in Armthorpe, Stainforth and Thorne for over 50's qualified to support with fall prevention - Active travel in Thorne, cycle route
Business, Employment and Housing	<ul style="list-style-type: none"> - Local people come together and thrive - Create and improve access to high quality employment and training - Homes that are fit for purpose and are environmentally friendly - Create thriving local businesses to serve the communities 	<ul style="list-style-type: none"> - Bronze lead discussions on supporting and setting up education and upskilling for job support across the East - Stainforth and Thorne collaboration with the Advance Team (employment and skills), Business Doncaster and local businesses to upskill and employ local people - North Eastern Road new affordable homes to be built in Thorne 126 - Citizens Advice & Age UK providing working age/65+ benefits information, advice & guidance through Civic Hub, telephone helpline, email, virtual sessions and in community venues

SOUTH LOCALITY PLAN 2022-2023 - ACHIEVEMENTS

	LOCALITY DELIVERY	UPDATES
Community Safety	<ul style="list-style-type: none"> - Reducing anti-social behaviour; increase feeling of safety - Vehicle nuisance, parking and road safety - Drug use and crime 	<ul style="list-style-type: none"> - Police and Communities Team re-established regular Community Engagement Meetings - Multi-agency Local Solutions Groups tackling persistent behaviour across South with enhanced Edlington focus - Safer Streets Funding (Round 3) delivered, Safer Streets Fund (Round 4) bid successful - liaising with community around new CCTV - Multi-agency summer interventions around Trans-Pennine Way - St Leger reviewing tenants own CCTV policy - PCSO's and community delivered Speed Watches - Multi-agency partnership day of action in Edlington including South Yorkshire Police and Council services including Street Scene - Crimestoppers Report It campaign around anti-social behaviour and crime to assist with Intel and feelings of safety

		<ul style="list-style-type: none"> - EPIC started new delivery in Edlington around criminal exploitation of young people - Additional outreach via Aspire Drug and Alcohol Service re substance misuse support
Children and Young People	<ul style="list-style-type: none"> - Improve Children & Young People's Provision 	<ul style="list-style-type: none"> - Youth voice commissioned Summer Staycation Activity Programme at 9 locations in South - activities and food were free of charge to families. - Strengthening existing community based assets to deliver to ensure sustainability beyond the summer - New youth worker recruited to further support third sector delivery and gaps - Access to Opportunities for Employment & Training Programme summer delivery - Your Life Doncaster launched helping promote activities to an increasing audience
Environment and Green Spaces	<ul style="list-style-type: none"> - Clean environment - Reduce fly-tipping and littering and optimise the response to incidences when they occur - Enhance our parks 	<ul style="list-style-type: none"> - Enhancing connections with Future Parks to increase engagement around the 5 proposed parkland areas - Litter picking groups mapped and starting to promote new members and new groups - Over the Summer, South Area had 125 fly tipping complaints with all investigated. 13 CCTV cameras installed to catch fly tippers. 6 Fixed Penalty Notices issued in relation to fly tipping and 2 prosecution cases progressing
Local Amenities and Town Centres	<ul style="list-style-type: none"> - Affordable and better access to public transport - Town centre improvements 	<ul style="list-style-type: none"> - Identified a gap in engagement – businesses. Directly engaged with business, especially small independent in local town centres, so we can respond to their concerns - First representation on SY Combined Mayoral Authority - Enhanced Partnership Forum meeting influencing public transport - Multi-agency work around anti-social behaviour and other crime in town/retail centres, e.g. civil action taken in Mexborough around street drinking - Enhanced response to anti-social behaviour through newly formed multi-agency Local Solutions Groups across South - Ukrainian Support: community members involved in Humanitarian Cell, direct support provided for transport, accommodation, education, learning and social care. Facilitated community drop-in's, advice clinics, collated and distributed donations (locally/internationally) and undertaken bespoke engagement to collate voice to influence future plans and service delivery
Poverty	<ul style="list-style-type: none"> - Scanning to understand the data - Access to support services 	<ul style="list-style-type: none"> - Production of enhanced statistics to ensure small pockets of poverty are not overlooked - Considering how support services will be accessed in areas with small pockets of poverty as well as those with high levels of deprivation

		- Promotion of foodbanks and support across the borough through Locality governance network
--	--	---

NORTH LOCALITY PLAN 2022-2023 - ACHIEVEMENTS		
	LOCALITY DELIVERY	UPDATES
Environment and Local Facilities	<ul style="list-style-type: none"> - Fly-tipping and excess littering is reduced - Improve street cleanliness - Support local people to be able to come together and thrive 	<ul style="list-style-type: none"> - Street Scene communications, awareness raising and education campaign related to fly tipping, hazardous waste collection, bulky household collections, distribution of waste collection calendars - Education programme delivered in Schools – environment and waste - Surveillance and monitoring of hot spot fly tipping locations - Regular bin inspections and removal of contaminated bins - Removal of abandoned abused bins - Cleansing of 393 street litter bins – 393 - Letter drops to residents about littering and 'bin it' sticker campaign - 7 environmental clean-up Days of Action in April & October 2022 - Liaising with Sustainability Team re their work on - Tree, planting, sustainability, Green transport, Environmental Pride, community support & engagement, Food Network, health and wellbeing, Eco-Churches and housing retrofits - Ukrainian Support: community members involved in Humanitarian Cell, direct support provided for transport, accommodation, education, learning and social care. Facilitated community drop-in's, advice clinics, collated and distributed donations (locally/internationally) and undertaken bespoke engagement to collate voice to influence future plans and service delivery
Mental and Physical Health	<ul style="list-style-type: none"> - Access to mental health support is improved - Health inequalities reduced 	<ul style="list-style-type: none"> - Working with health partners to look at provision/expansion of mental health services, including Primary Care Network - Woodlands Library - Established family support referrals with Your Family Triage Team - Safe-Space provision at St Catherine's hospital for crisis support - Advance Team providing mental health First Aid training - Promotion of Together All: App for Adult Mental Health - Suicide Alliance - awareness training across all localities & toolkit launched - Working with health partners to promote access to and expand mental health services
Housing	<ul style="list-style-type: none"> - Rent arrears are reduced - Fewer neighbour disputes 	<ul style="list-style-type: none"> - Cost of Living Toolkit and Steering group developed.

		<ul style="list-style-type: none"> - Advance Team (employment and skills support) and Employment Hubs providing support into employment and raise income - St Leger Homes offering support to families struggling financially
Children and Young People	<ul style="list-style-type: none"> - Young people have something to do and somewhere to go - Youth provision is improved 	<ul style="list-style-type: none"> - Your Life Doncaster - tool to share community good news stories and event to all communities - Promotion to residents of Family Hubs - Provision of the Holidays and Food programme - EXPECT Youth delivering to link with North locality plan - Safer Streets Funding secured to expand youth activities - Voluntary sector organisations supported to develop youth provision - Youth worker team to be located in each locality - Your Life Doncaster - tool to share community good news stories and event to all communities - 2965 subscribers to Your Life Doncaster
Community Safety	<ul style="list-style-type: none"> - Reduction in anti-social behaviour - Residents feel safer and more secure - Nuisance vehicle and dangerous driving is reduced 	<ul style="list-style-type: none"> - Police boundary realignment finalised to establish a fourth Neighbourhood Policing Team in the North Locality from January 2023 - Safer Streets Funding secured and funding to tackle anti-social behaviour and violence against women and girls - EXPECT Youth providing targeted activities at Bentley My Place - Planning in progress for activities and community support for Operation Anticipate (Halloween and Bonfire anti-social behaviour programme) - Supporting Stronger Families Programme governance and delivery - EPIC Youth – virtual reality and workshops - 7 Community safety Days of Action in April & October 2022
Poverty	<ul style="list-style-type: none"> - We all understand the implications of poverty on everyone and everywhere - There is better support for those in all forms of poverty - Make positive steps to minimise the impact of future poverty 	<ul style="list-style-type: none"> - Working with employment hubs and Advance - employment support team - Delivery cost of living briefings/sessions, e.g. on Winter Warmth through Community Led Solutions (CLS) - Council Energy Team issue energy vouchers. Positive Activity Groups and CLS also support - Promotion of foodbanks and support across the borough through bronze governance meetings

CENTRAL LOCALITY PLAN 2022-2023 - ACHIEVEMENTS

	LOCALITY DELIVERY	UPDATES
Environment and Green Spaces	<ul style="list-style-type: none"> - Protect and enhance green spaces 	<ul style="list-style-type: none"> - Green Flag status awarded Sandall, Hexthorpe and Elmfield parks, memorial tree planted in Elmfield Park and the summer

	<ul style="list-style-type: none"> - Reduce fly-tipping and littering and optimise the response to incidences when they occur - Enhance the safety and condition of homes - Fuel poverty 	<p>naturalisation and wildflower signage programme implemented across Central</p> <ul style="list-style-type: none"> - Refill campaign launched during 'Delicious Doncaster Food festival,' to be repeated during Rugby League World Cup - 350 homes in Intake being improved through the Thermal Efficiency Programme, work has started in 327 with 224 now complete and remainder to be finished by quarter 4 - Selective Licensing Scheme launched in Hexthorpe, 217 applications out for consultation, 78 licences and £67.5k of fine notifications issued - Citizens Advice & Age UK Doncaster providing working age / 65+ benefits information, advice & guidance through Civic Hub, telephone helpline, email, virtual sessions and in community venues - Council Tax reduction for band A-D, 'Fuel Bank Foundation' voucher scheme made available, targeted media campaign by energy team and Community Renewal Fund used to support energy audits in local schools
Community Safety	<ul style="list-style-type: none"> - Reducing anti-social behaviour - Reducing crime and reoffending - Preventing and reducing violent crime - Reducing substance and alcohol misuse - Promote road safety - Tackle street homelessness, rough sleeping and begging 	<ul style="list-style-type: none"> - Youth Zone launched, youth charter developed by young people, co-designed & co-delivered anti-social behaviour plans in City Centre and Lower Wheatley - Multiple days & weekends of action carried out in the City and wider Central Locality to prevent/address anti-social behaviour - Report It campaign launched and ongoing - Practitioner training: County Lines, Child Criminal Exploitation, Violence Against Women & Girls delivered - 53 drugs warrants have been executed across Central, 5225 cannabis plants have been seized with a value of £5,225,000, 6 drugs dog operations have been carried out - Knife warrants have been issued to licensed premises, knife arch operations have taken place in the city - Support for the 'Reduce The Strength' campaign has increased (over 55 off-licences signing up), 'Best Bar None' has been relaunched and training for night time economy practitioners has taken place in July - Drug & alcohol awareness campaigns to minimise the harm associated with their use and practitioner training has been delivered - Community speed operations have been conducted in 41 locations, 2157 have been cars checked with 183 found over the limit - The 'Real Help' scheme has been re-launched, additional funding has been awarded to increase outreach resources and E-bed provision

Community Spirit and Pride	<ul style="list-style-type: none"> - More community events and galas - Publicise activities in the local community - Promote community spirit & pride through community assets - Promote positive messaging across communities 	<ul style="list-style-type: none"> - Your Life Doncaster' (YLD) has been upgraded and includes a tool to tailor the information to a village/town - Locality pages have been created and the Locality Plans housed on the YLD platform - Local activities have been publicised on YLD, Visit Doncaster and through targeted social media posts to local community groups - Email campaign has attracted 4059 subscribers in Central who now receive the Locality newsletter and the 2023/24 Locality Plan Survey circulated to residents for community feedback - St Leger Homes have carried out a series of Tenant Roadshows and Police and partner community engagement meetings have been re-established to facilitate feedback across communities - Stakeholders and 'Friends of' groups have delivered a range of activities across the spring/summer (e.g. Delicious Doncaster, Hexthorpe Primary health fair, Caribbean Fun Day (30/7), Bessacarr summer fayre (6/8), Dance-on (20/8), Picnic in the park - Westfield, Hexthorpe, Town Fields, Cantley & Elmfield, Age-Friendly event, Bennetthorpe 28/9)
Amenities, Services and Support	<ul style="list-style-type: none"> - Broad range of services and activities available in the local community - Information, Advice & Guidance is available to support the local community - Raise awareness of local amenities, services & support - Accessible and inclusive provision for all communities - Communities can come together and thrive 	<ul style="list-style-type: none"> - Launch of Active Travel Hub at the Railways Station, inclusive cycling offer 'Wheels 4 all' at the cycle track (weekly), 'Play Streets' toolkit developed (resident led safe play space opportunity), 'Bikeability' offered to years 5/6 in Primary schools, adult & family cycle training at Sandall & Woodfield Park each week - City Centre Youth Zone provide safe space for young people, 5 x Picnic in the park events, Kixx activity programme and Holiday Activity Fund programme delivered across all wards - Mental Health Awareness Week 9/5-13/5 and SIA Loneliness Awareness Week 12/6-14/6, media campaign and toolkit publicised, Loneliness & Isolation open afternoon at Flourish, Balby - Together All adult MH support website launched, 'My Strength' app commissioned through Integrated Care Board to support stress, depression and sleep deprivation. - Kooth app and toolkit launched in all secondary schools and Zero Suicide Alliance training for practitioners and community - ESOL provision supported at Doncaster Minster and Doncaster College delivery language skills in Hexthorpe - Ukrainian Support: community members involved in Humanitarian Cell, direct support provided for transport, accommodation,

		<p>education, learning and social care. Facilitated community drop-in's, advice clinics, collated and distributed donations (locally/internationally) and undertaken bespoke engagement to collate voice to influence future plans and service delivery</p> <ul style="list-style-type: none"> - Your Family Team now established and Innovation Hub pilots in Bessacarr & Wheatley Wards to support children, families and adults - Additional outreach secured within Riverside and Amber to support vulnerable people
Support for Businesses	<ul style="list-style-type: none"> - Increase footfall and trade - Maximise energy efficiency of businesses - Refresh and repurposing of businesses - Build trust and confidence with businesses - Reduce litter and waste - Support for existing & small businesses 	<ul style="list-style-type: none"> - Marketing plan in place, focuses on activities over next 12 months - Visitor Guide Launch, Delicious Doncaster Food and Drink Festival, Steampunk, Armed Forces Day, awareness days to promote Doncaster City centre venues and businesses - Work ongoing with Frenchgate Centre to explore ways to maximise energy efficiency and stakeholder training being delivered relating to carbon literacy - Hospitality Forum in place and well supported by the sector, the forum is collaborating on events, promotions and presenting a unified voice to lobby for change. Work underway with retail sector to facilitate similar forum and ongoing work with businesses at Lakeside to promote offer - Mapping of city centre ownership complete, filling of void properties ongoing through Business Doncaster & St Leger Homes. Shop front improvement scheme in development for Scot Lane, Goose Hill and Sunny Bar with grant funding available. Sponsorship opportunities continue to be explored and external funding requests have been added to SY Mayoral Combined Authority project pipeline - Friends of Sandall Park have linked with McDonalds and KFC regarding litter and social responsibility - Additional engagement carried out with small businesses in communities to inform future Locality plan









OPTIONS CONSIDERED

15. Not applicable. This report is intended for information and discussion.

REASONS FOR RECOMMENDED OPTION

16. Not applicable. This report is intended for information and discussion.

IMPACT ON THE COUNCIL'S KEY OUTCOMES

Great 8 Priority	Positive Overall	Mix of Positive & Negative	Trade-offs to consider – Negative overall	Neutral or No implications
 Tackling Climate Change	✓			
Locality plans, community commissioning and integrated working will allow an improved understanding of the issues and challenges faced by Doncaster residents and the assets in communities to build upon.				
 Developing the skills to thrive in life and in work	✓			
Locality working secures inclusive growth across the Borough (by removing barriers to inclusion and connecting people and places to economic opportunity, including those facing greatest disadvantage).				
 Making Doncaster the best place to do business and create good jobs	✓			
Locality working secures inclusive growth across the Borough (by removing barriers to inclusion and connecting people and places to economic opportunity, including those facing greatest disadvantage).				
 Building opportunities for healthier, happier and longer lives for all	✓			
Locality working reduces demand for acute and reactive Council and wider public service interventions (though a more preventive, integrated approach).				
 Creating safer, stronger, greener and cleaner communities where everyone belongs	✓			
Locality working improves the resident experience of services (through a more locally informed, integrated and relationship focused approach).				
 Nurturing a child and family-friendly borough	✓			
Integrated locality operating model enables front line workers to act together in a locally responsive, relational, whole family approach - across people and place.				
 Building Transport and digital connections fit for the future	✓			
Locality working improves the resident experience of services (through a more locally informed, integrated and relationship focused approach).				
 Promoting the borough and its cultural, sporting, and heritage opportunities	✓			

Locality working improves the resident experience of services (through a more locally informed, integrated and relationship focused approach).				
Fair & Inclusive	✓			
At the heart of locality working is to have the ability to fundamentally understand the inequalities that exist within the borough.				

LEGAL IMPLICATIONS [Officer Initials: SRF Date: 21/10/2022]

17. There are no specific legal implications arising from this report. Specific advice can be provided on any questions raised by the Committee.

FINANCIAL IMPLICATIONS [Officer Initials: NC Date: 24/10/2022]

18. There are no specific financial implications arising as a direct result of this report, any costs and funding streams associated with this report have been the subject of other decision records. This project is a major undertaking for the Council and its partners, reflecting a significant shift to a new operating model, with political, strategic and technical challenges involved. Delivery of the project is mainly through existing resources, in part through the incorporation and alignment of existing activity, with some access to specialist and technical support to provide assistance in key areas.

HUMAN RESOURCES IMPLICATIONS [Officer Initials: AT Date: 24/10/2022]

19. There are no human resources implications arising from this report.

TECHNOLOGY IMPLICATIONS [Officer Initials: PW Date 21/10/2022]

20. There are no specific technology implications arising from this report. Any requirements for new, enhanced or replacement technology to support the delivery of Locality Plans will need to be considered and prioritised by the Technology Governance Board (TGB).

RISKS AND ASSUMPTIONS

21. For the purposes of this report, the risks and assumptions are outlined in the body of the report. There are of course risks to the overall programme and these risks are carefully managed with clear mitigation measures and continuous assessment. In line with the programme governance - risks and issues with mitigations are stored on Pentana - the Council's Corporate Performance Management System.

CONSULTATION

22. Consultation is on-going throughout the localities model. For the purposes of this report, consultation has taken place with key staff and Directors.

BACKGROUND PAPERS

23. The following background papers are available.

- i) Locality presentations
- ii) Locality Plans – North, East, South and Central Locality areas
<https://www.yourlifedoncaster.co.uk/central-locality>
<https://www.yourlifedoncaster.co.uk/east-locality>
<https://www.yourlifedoncaster.co.uk/north-locality>
<https://www.yourlifedoncaster.co.uk/south-locality>

GLOSSARY OF ACRONYMS AND ABBREVIATIONS

24. Acronyms and abbreviations are explained in the body of the report.

REPORT AUTHOR & CONTRIBUTORS

Name: Pat Hagan

Title: Head of Localities and Town Centre

Phone Number: 01302 737609

Email address: pat.hagan@doncaster.gov.uk

Phil Holmes

Director, Adults, Health and Wellbeing